

MACEY CONTROLS LTD

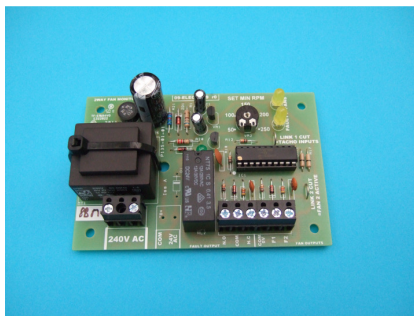
EC FAN DEVICES

Macey Controls have developed a number of units specifically for use with EC Fans some are set out in this brochure.

FAN MONITORING UNITS

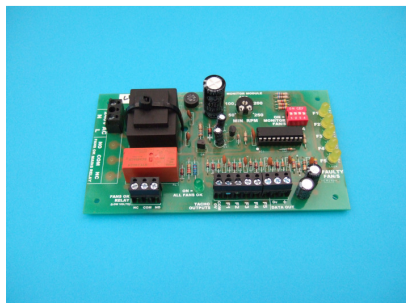
We have three standard fan monitoring modules. All types can be built to different levels depending upon the final application.

1 or 2 FAN MONITOR



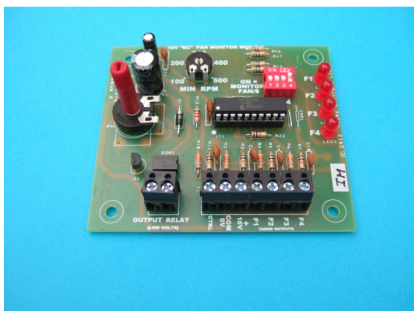
- Can monitor 1 or 2 fans (selectable by cutting link)
- Can monitor the tacho RPM speed outputs or fans with a fault output
- Provides a voltage free relay change over contact (fail safe) which operate when one / both fans go into fault mode or drop below the minimum fan speed
- Minimum fan speed field adjustable from 50 to 250 RPM
- Visual LED indication of each fan status

1 TO 5 FAN MONITOR



- Can monitor 1 to 5 fans (field selectable)
- It monitors the tacho RPM speed output
- Provides a voltage free relay change over contact which operate when one or more fans drop below the minimum fan speed
- Minimum fan speed field adjustable from 50 to 250 RPM
- Visual LED indication of each fan status
- Analogue output which allows remote diagnostics of each fan's status

10V 1 TO 4 FAN MONITOR

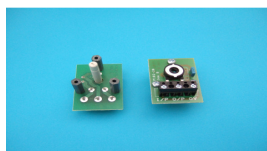


- Works off the 10V from the EC Fan/s does not need a mains supply.
- Can monitor 1 to 4 fans (field selectable)
- It monitors the tacho RPM speed output
- Provides a voltage free solid state relay which gives an output when one or more fan/s drop below the minimum fan speed
- Different versions of software available for setting minimum fan speed
- Visual LED indication of each fan status
- Incorporates a simple speed control

EC FAN CONTROL

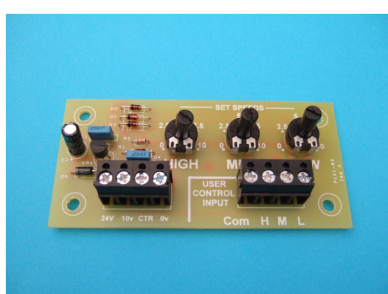
We can offer a number of units that can be used to control EC Fans.

SPEED CONTROL



This is a simple speed control module which can be used to set EC fan/s speed. It is connected to the fans 10v output and an adjustable tapped voltage is used to set the fan speed

EC FAN 3 WAY SPEED CONTROL



- This module allows up to three pre-set speeds to be selected by an external user control
- It will normally be powered from the 10V from the EC Fan/s
- Can also be run from a 24V supply (AC or DC)

EC FAN TRICKLE / BOOST CONTROL



- This provides two speed settings
- The normal 24/7 trickle fan speed can be preset
- Upon the application of 240v AC signal the unit will switch to the pre set boost speed
- It is housed in a plastic moulding which fits onto a standard single gang back box

The above units can always be configured into bespoke version for individual customers. Alternatively, Macey Controls can design new units to customer specific requirements, subject to quantities being ordered.

OTHER INFORMATION

We can supply other items associated with EC Fan such as built-in mains filters etc. If you require further information regarding prices availability special options we may be contacted as below.

Macey Controls Ltd
Crystal Haven House,
Hanworth lane,
Chertsey,
Surrey.

Phone (0)1932 571 990
sales@maceycontrols.com